



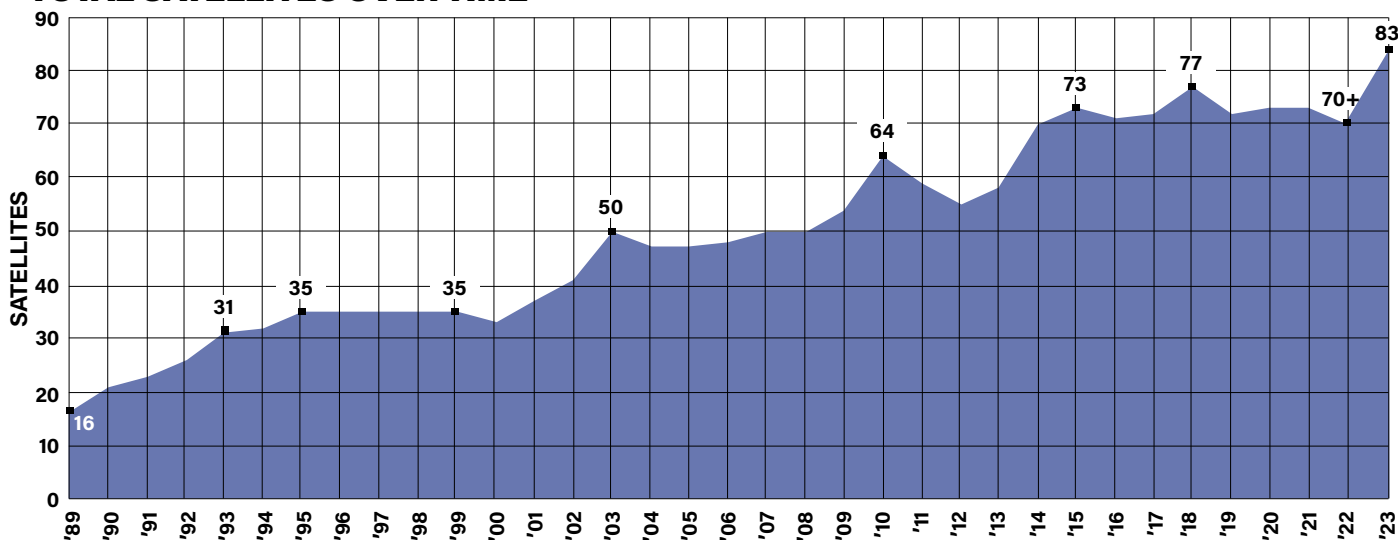
U.S. SPACE FORCE

The U.S. Space Force was created on Dec. 20, 2019. The Space Force exists as a separate military service within the Department of the Air Force, with its own service chief. The Chief of Space Operations is a member of the Joint Chiefs of Staff

USSF/Lockheed Martin illustration

The Global Positioning System (GPS) is a constellation of orbiting satellites that provides position, navigation, and timing data to military and civilian users globally. This GPS III satellite in orbit above the Earth is operated and controlled by Delta 8, Schriever Space Force Base, Colo.

TOTAL SATELLITES OVER TIME



SATELLITES IN SERVICE OVER TIME

(As of Sept. 30, 2022)

TYPE OF SYSTEM	2012	2013	2014	2015	2016	2017	2018	2019	2020	2021	2022	2023
AEHF	2	2	3	3	3	3	4	5	5	5	6	6
ATRR	1	1	0	0	0	1	1	1	1	1	1	1
DMSP	4	4	6	6	6	5	5	4	4	4	4	3
DSCS	8	8	7	6	6	6	6	6	6	6	6	4
GPS	30	31	38	41	37	35	31	29	31	31	32	31
GSSAP	0	0	2	2	4	4	4	4	4	4	6	6
Milstar	5	5	5	5	5	5	5	5	4	4	5	4
ORS-5								1	1	1	1	1
SBIRS	1	2	2	2	2	3	7	6	6	6	7	7
SBSS	1	1	1	1	1	1	2	1	1	1	1	1
WGS	3	3	4	6	7	7	9	10	10	10	10	10
MUOS												5
UFO												4
Total Satellites*	55	58	70	73	71	72	77	72	73+	73+	70+	83

*Classified systems not listed.



**Gen. B. Chance Saltzman,
Chief of Space Operations**

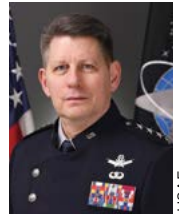
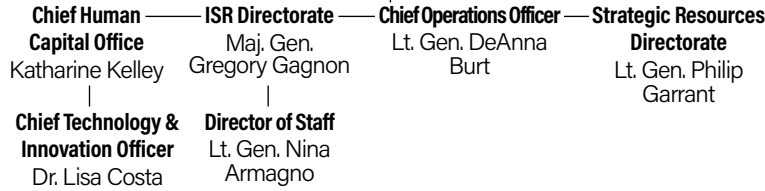
Headquarters: Pentagon, Va.
Date of current designation: Dec. 20, 2019

Secretary of the Air Force

Chief of Space Operations:
Gen. B. Chance Saltzman
Vice Chief of Space Operations:
Gen. David D. Thompson

Chief Master Sergeant of the Space Force:
Roger A. Towberman

Space Staff



**Gen. David D. Thompson
Vice Chief of Space Operations**



Chief Master Sgt. Roger A. Towberman*

*Chief Master Sgt. John F. Bentivegna was nominated to succeed Towberman as Chief Master Sergeant of the Space Force on May 5, 2023.

FIELD COMMANDS



Space Operations Command

Headquarters: Peterson SFB, Colo.
Date of activation: Oct. 21, 2020
Commander: Lt. Gen. Stephen N. Whiting

MAJOR UNITS	LOCATION	MISSION
Space Delta 2	Peterson SFB, Colo.	Space domain space awareness
Space Delta 3	Peterson SFB, Colo.	Electromagnetic warfare
Space Delta 4	Buckley SFB, Colo.	Missile warning
Space Delta 5	Vandenberg SFB, Calif.	Operational level command and control
Space Delta 6	Schriever SFB, Colo.	Space access, cyberspace operations
Space Delta 7	Peterson SFB, Colo.	ISR
Space Delta 8	Schriever SFB, Colo.	SATCOMS, position, navigation, timing
Space Delta 9	Schriever SFB, Colo.	Orbital warfare, Space domain awareness
Space Base Delta 2	Buckley SFB, Colo.	Mission support



Space Systems Command

Headquarters: Los Angeles AFB, Calif.
Date of activation: Aug. 13, 2021
Commander: Lt. Gen. Michael A. Guetlein

MAJOR UNITS	LOCATION	MISSION
Space Development Agency	Pentagon	Acquisition
Space Launch Delta 30	Vandenberg SFB, Calif.	Space launch, ICBM test, launch range operations
Space Launch Delta 45	Patrick SFB, Fla.	Space launch, launch range operations
Space Rapid Capabilities Office	Kirtland AFB, N.M.	Acquisition



Space Training and Readiness Command

Headquarters: Peterson SFB, Colo.*
Date of activation: Aug. 23, 2021
Commander: Maj. Gen. Shawn N. Bratton

MAJOR UNITS	LOCATION	MISSION
Space Delta 1	Vandenberg SFB, Calif.	Space training
25th Space Range Squadron	Schriever SFB, Colo.	Operates the space test and training range
527th Space Aggressor Squadron	Schriever SFB, Colo.	Simulates adversary threats for training
705th Combat Training Squadron Operating Location Alpha	Schriever SFB, Colo.	Virtual exercises
National Security Space Institute	Peterson SFB, Colo.	Space education and training
USAF Warfare Center, Detachment 1	Schriever SFB, Colo.	Operational test and evaluation, tactics development, and training

*The Department of the Air Force announced in May 2023 that its preferred permanent location for STARCOM's headquarters is Patrick Space Force Base, Fla.



U.S. SPACE FORCE BUDGET SUMMARY

Funding (\$ billions)	2023 (Estimated)	2024 (Requested)
Operations & Maintenance	\$4.0	\$4.9
Research, Development, Test & Evaluation	16.6	19.2
Military Personnel	1.0	1.2
Procurement	4.5	4.7
Total	26.1	30.0
Authorized Manpower	2023 (Enacted)	2024 (Requested)
Military	8,600	9,400
Civilian	4,714	4,909
Total Force Personnel	13,527	14,526
Major USSF Procurement Quantities	2023 (Enacted)	2024 (Requested)
National Security Space Launches	3.0	10.0
SDA Launch	2.0	1.8
Space-Based Missile Warning Systems	7.0	5.0

Source: Fiscal 2024 Department of the Air Force Budget Overview

MAJOR USSF PROGRAMS (RDT&E)

(Current \$ millions)

	2022	2023 (Enacted)	2024	2025	2026	2027	2028
Counterspace Systems	46.872	31.544	36.537	37.014	37.322	38.084	39.46
Next-Gen OPIR	125.853	226.601	222.178	227.501	230.095	233.231	241.905
Weather System Follow-On	64.759	0.0	0.0	0.0	0.0	0.0	0.0
Protected Tactical Service	221.355	252.078	360.126	348.387	345.422	464.18	482.389
Protected Tactical Enterprise Service	96.942	110.801	76.554	88.871	38.525	36.177	87.552
Space Test Program	20.185	25.291	30.192	30.226	29.781	30.39	31.487
Space C2 Software Pilot	0.0	155.553	122.326	123.422	126.137	128.715	133.365
Polar MILSATCOM	79.557	67.215	73.757	0.0	0.0	0.0	0.0
Wideband Global SATCOM	0.0	48.288	49.445	0.0	0.0	0.0	0.0
GPS III Space Segment	6.998	1.526	0.0	0.0	0.0	0.0	0.0
GPS III Follow-On Satellites	237.947	292.847	308.999	254.025	193.634	167.288	70.12
GPS III Operational Control Segment	388.977	277.052	317.309	82.385	22.836	6.616	6.855
Ballistic Missile Defense Radars	7.432	21.615	20.752	9.065	1.468	0.0	0.0
Space Science and Technology Research and Development (Space Development Agency)	0.0	447.472	472.493	489.58	493.127	509.703	525.104
Space Development Agency Launch	N/A	N/A	N/A	N/A	N/A	N/A	N/A

MAJOR USSF PROGRAMS (PROCUREMENT)

(Current \$ millions)

	2022	2023 (Enacted)	2024	2025	2026	2027	2028
Counterspace Systems	64.804	60.241	52.665	4.27	2.056	2.109	2.153
Next-Gen OPIR	N/A	N/A	N/A	N/A	N/A	N/A	N/A
Weather System Follow-On	N/A	N/A	N/A	N/A	N/A	N/A	N/A
Protected Tactical Service	N/A	N/A	N/A	N/A	N/A	N/A	N/A
Protected Tactical Enterprise Service	N/A	N/A	N/A	N/A	N/A	N/A	N/A
Space Test Program	N/A	N/A	N/A	N/A	N/A	N/A	N/A
Space C2 Software Pilot	N/A	N/A	N/A	N/A	N/A	N/A	N/A
Polar MILSATCOM	N/A	N/A	N/A	N/A	N/A	N/A	N/A
Wideband Global SATCOM	N/A	N/A	N/A	N/A	N/A	N/A	N/A
GPS III Space Segment	84.452	103.34	121.77	75.491	50.078	2.809	0
GPS III Follow-On Satellites	835.176	616.962	119.7	678.531	708.802	743.06	758.646
GPS III Operational Control Segment	N/A	N/A	N/A	N/A	N/A	N/A	N/A
Ballistic Missile Defense Radars	36.622	18.116	N/A	N/A	N/A	N/A	N/A
Space Science and Technology Research and Development (Space Development Agency)	N/A	N/A	N/A	N/A	N/A	N/A	N/A
Space Development Agency Launch	0	746.288	529.468	498.405	412.147	241.559	246.626



US SPACE FORCE DEMOGRAPHICS

(As of Sept. 30, 2022)

ENLISTED RANKS	E-1	%	E-2	%	E-3	%	E-4	%	E-5
TOTAL	89	1.1	153	1.9	746	9.1	597	7.3	948
Sex									
Female	25	28.1	42	27.5	166	22.3	114	19.1	162
Male	64	71.9	111	72.6	580	77.8	483	80.9	786
Ethnicity									
Declined to Respond	0	0.0	0	0.0	0	0.0	5	0.8	11
Hispanic or Latino	22	24.7	12	7.8	175	23.5	130	21.8	169
Not Hispanic or Latino	67	75.3	141	92.2	571	76.5	462	77.4	768
Race									
American Indian or Alaska Native	3	3.4	2	1.3	8	1.1	7	1.2	10
Asian	8	9.0	8	5.2	53	7.1	29	4.9	44
Black or African American	6	6.7	25	16.3	82	11.0	70	11.7	96
Declined to Respond	0	0.0	1	0.7	1	0.1	13	2.2	29
Identified More Than One Race	12	13.5	15	9.8	72	9.7	39	6.5	60
Native Hawaiian or Other Pacific Islander	2	2.2	5	3.3	15	2.0	3	0.5	8
White	58	65.2	97	63.4	515	69.0	436	73.0	701
Marital Status									
Divorced	0	0.0	2	1.3	10	1.3	20	3.4	68
Married	4	4.5	21	13.7	190	25.5	229	38.4	523
Single	85	95.5	130	85.0	546	73.2	347	58.1	355
Other*	0	0.0	0	0.0	0	0.0	1	0.2	2
Highest Educational Achievement									
No High School Diploma or GED	0	0.0	0	0.0	0	0.0	0	0.0	0
High School Diploma/GED	73	82.0	50	32.7	80	10.7	62	10.4	117
Some College	13	14.6	95	62.1	563	75.5	414	69.3	448
Associate Degree	0	0.0	0	0.0	6	0.8	77	12.9	258
Bachelor's Degree	0	0.0	0	0.0	32	4.3	41	6.9	104
Master's Degree	0	0.0	0	0.0	0	0.0	1	0.2	19
Ph.D. or Professional Degree	0	0.0	0	0.0	0	0.0	0	0.0	0
Unknown, None, or Not Applicable	3	3.4	8	5.2	65	8.7	2	0.3	2
OFFICER RANKS									
TOTAL	0-1	%	0-2	%	0-3	%	0-4	%	0-5
TOTAL	486	5.9	534	6.5	1,303	15.9	1,009	12.3	667
Sex									
Female	141	29.0	130	24.3	240	18.4	160	15.9	100
Male	345	71.0	404	75.7	1,063	81.6	849	84.1	567
Ethnicity									
Declined to Respond	179	36.8	135	25.3	218	16.7	136	13.5	134
Hispanic or Latino	40	8.2	65	12.2	131	10.1	87	8.6	46
Not Hispanic or Latino	267	54.9	334	62.5	954	73.2	786	77.9	487
Race									
American Indian or Alaska Native	0	0.0	5	0.9	5	0.4	10	1.0	1
Asian	54	11.1	48	9.0	125	9.6	80	7.9	48
Black or African American	24	4.9	30	5.6	90	6.9	62	6.1	38
Declined to Respond	27	5.6	38	7.1	67	5.1	67	6.6	38
Identified More Than One Race	26	5.3	33	6.2	85	6.5	40	4.0	18
Native Hawaiian or Other Pacific Islander	3	0.6	5	0.9	8	0.6	6	0.6	2
White	352	72.4	375	70.2	923	70.8	744	73.7	522
Marital Status									
Divorced	3	0.6	14	2.6	50	1.9	50	5.0	32
Married	103	21.2	232	43.4	830	31.8	822	81.5	592
Single	379	78.0	288	53.9	423	16.2	135	13.4	41
Other*	1	0.2	0	0.0	0	50.0	2	0.2	2
Highest Educational Achievement									
Bachelor's Degree	318	65.4	404	75.7	681	52.3	139	13.8	3
Master's Degree	10	2.1	73	13.7	578	44.4	812	80.5	593
Ph.D. or Professional Degree	0	0.0	0	0.0	6	0.5	26	2.6	44
Unknown, None, or Not Applicable	158	32.5	57	10.7	38	2.9	32	3.2	27

*Includes annulled, legally separated, widowed, interlocutory decree, and unknown.

%	E-6	%	E-7	%	E-8	%	E-9	%	Total	%	Space Force Total*	%
11.5	740	9.01	541	6.6	124	1.5	43	0.5	3,981	48.5	8,216	100.0
171	116	15.7	92	17.0	33	26.6	12	27.9	762	19.1	1,564	19.0
82.9	624	84.3	449	83.0	91	73.4	31	72.1	3,219	80.9	6,652	81.0
1.2	15	2	18	3.3	7	5.6	2	4.7	58	1.5	865	10.5
17.8	131	17.7	85	15.7	18	14.5	5	11.6	747	18.8	1,127	13.7
81	594	80.3	438	81.0	99	79.8	36	83.7	3,176	80	6,224	75.8
1.1	4	0.5	4	0.7	2	1.6	0	0.0	40	1.0	62	0.8
4.6	30	4.1	18	3.3	8	6.5	0	0.0	198	5.0	558	6.8
10.1	65	8.8	51	9.4	11	8.9	4	9.3	410	10.3	667	8.1
3.1	29	3.9	32	5.9	9	7.3	6	14.0	120	3.0	368	4.5
6.3	42	5.7	39	7.2	7	5.6	1	2.3	287	7.2	495	6.0
0.8	7	0.9	8	1.5	4	3.2	0	0.0	52	1.3	76	0.9
73.9	563	76.1	389	71.9	83	66.9	32	74.4	2,874	72	5,990	72.9
7.2	64	8.6	39	7.2	11	8.9	4	9.3	218	5.5	377	4.6
55.2	559	75.5	454	83.9	109	87.9	39	90.7	2,128	54	4,927	60.0
37.4	116	15.7	48	8.9	4	3.2	0	0.0	1,631	41.0	2,901	35.3
0.2	1	0.1	0	0.0	0	0.0	0	0.0	4	0.1	11	0.1
0.0	0	0.0	0	0.0	0	0.0	0	0.0	0	0.0	0	0.0
12.3	101	13.6	20	3.7	0	0.0	0	0.0	503	12.6	503	6.1
47.3	176	23.8	38	7.0	5	4.0	0	0.0	1,752	44.0	1,752	21.3
27.2	281	38.0	205	37.9	26	21.0	5	11.6	858	21.6	858	10.4
11.0	155	20.9	210	38.8	47	37.9	19	44.2	608	15.3	2,153	26.2
2.0	27	3.6	67	12.4	45	36.3	1	2.3	160	4.0	2,434	29.6
0.0	0	0.0	1	0.2	1	0.8	18	41.9	20	0.5	114	1.4
0.2	0	0.0	0	0.0	0	0.0	0	0.0	80	2.0	402	4.9
%	0-6	%	0-7	%	0-8	%	0-9	%	0-10	%	Officer Total	%
8.1	212	2.6	10	0.1	6	0.1	5	0.1	3	0.0	4,235	51.6
15.0	29	13.7	0	0.0	0	0.0	1	20.0	0	0.0	802	18.9
85.0	183	86.3	10	100.0	6	100.0	4	80.0	3	100.0	3,433	81.1
20.1	5	2.4	0	0.0	0	0.0	0	0.0	0	0.0	807	19.1
6.9	11	5.2	0	0.0	0	0.0	0	0.0	0	0.0	380	9.0
73.0	196	92.5	10	100.0	6	100.0	5	100.0	3	100.0	3,048	72.0
0.1	1	0.5	0	0.0	0	0.0	0	0.0	0	0.0	22	0.5
7.2	5	2.4	0	0.0	0	0.0	0	0.0	0	0.0	360	8.5
5.7	11	5.2	1	10.0	1	16.7	0	0.0	0	0.0	257	6.1
5.7	11	5.2	0	0.0	0	0.0	0	0.0	0	0.0	248	5.9
2.7	6	2.8	0	0.0	0	0.0	0	0.0	0	0.0	208	4.9
0.3	0	0.0	0	0.0	0	0.0	0	0.0	0	0.0	24	0.6
78.3	178	84.0	9	90.0	5	83.3	5	100.0	3	100.0	3,116	74
4.8	10	4.7	0	0.0	0	0.0	0	0.0	0	0.0	159	2.9
88.8	196	92.5	10	100.0	6	100.0	5	100.0	3	100.0	2,799	50.5
6.1	4	1.9	0	0.0	0	0.0	0	0.0	0	0.0	1,270	22.9
0.3	2	0.9	0	0.0	0	0.0	0	0.0	0	0.0	7	23.7
0.4	0	0.0	0	0.0	0	0.0	0	0.0	0	0.0	1,545	36.5
88.9	184	86.8	10	100.0	6	100.0	5	100.0	3	100.0	2,274	53.7
6.6	18	8.5	0	0.0	0	0.0	0	0.0	0	0.0	94	2.2
4.0	10	4.7	0	0.0	0	0.0	0	0.0	0	0.0	322	7.6

USSF PERSONNEL

Active Duty as of Sept. 30, 2022

Active duty entering via transfers and accessions: 8,216

SPACE FORCE PERSONNEL BY AFSC AND SEX

As of Sept. 30, 2022

ENLISTED	GENDER				TOTAL	
	Male		Female		#	%
CORE AFSC	#	%	#	%		
5C0-Cyber Ops.	1,312	34.16%	246	6.40%	1,558	40.56%
510-All Source Intelligence Analyst	197	5.13%	87	2.27%	284	7.39%
511-Geospatial Intelligence Analyst	44	1.15%	27	0.70%	71	1.85%
512-Signals Intelligence Analyst	266	6.93%	73	1.90%	339	8.83%
514-Intelligence Analyst	74	1.93%	39	1.02%	113	2.94%
518-Targeting Analyst	21	0.55%	6	0.16%	27	0.70%
5S0-Space Systems Operations	1,014	26.40%	198	5.15%	1,212	31.55%
5Z8-Space Operations Superintendent	81	2.11%	33	0.86%	114	2.97%
5Z9-Space Operations CEM	31	0.81%	11	0.29%	42	1.09%
Unknown	56	1.46%	25	0.65%	81	2.11%
Total Space Force Enlisted	3,096	80.60%	745	19.40%	3,841	100.00%

OFFICER	GENDER				TOTAL	
	Male		Female		#	%
CORE AFSC	#	%	#	%		
13A-Astronaut	2	0.05%	0	0.00%	2	0.05%
13S-Space Ops.	1,482	35.12%	420	9.95%	1,902	45.07%
14N-Intelligence	123	2.91%	74	1.75%	197	4.67%
17S-Cyberspace Effects Ops.	186	4.41%	36	0.85%	222	5.26%
62E-Development Engineer	971	23.01%	140	3.32%	1,111	26.33%
63A-Acquisition Manager	630	14.93%	124	2.94%	754	17.87%
90G-General Officer	20	0.47%	2	0.05%	22	0.52%
Unknown	8	0.19%	2	0.05%	10	0.24%
Total Space Force Officer	3,422	81.09%	798	18.91%	4,220	100.00%



U.S. Space Force Maj. Brandon Hammond, Space Delta 6—Cyberspace Operations Detachment 3 commander, oversees the personnel at Ka'ena Point Space Force Station, Hawaii. Ka'ena Point SFS is a remote tracking station of the Satellite Control Network responsible for tracking satellites in orbit, receiving and processing data, and enabling control of satellites.

USSF HISTORICAL LINEAGE

The U.S. Space Force traces its roots to the beginning of the Cold War, with the first Air Force space programs starting in 1945. USAF's Western Development Division, under Gen. Bernard A. Schriever, was established in 1954 as the first dedicated space organization within the U.S. Armed Forces. Military space forces were organized under several different Air Force major commands until they were unified when Air Force Space Command was established in September 1982. In December 2019, AFSPC became the cornerstone for the U.S. Space Force as a separate military branch. Below, we trace space organizational lineage within the Department of the Air Force. Because the space mission was—and to some extent still is—spread across several commands, offices, organizations, divisions, and services, some entries are concurrent and non-USAF organizations are not listed. This Space Force history is not intended to be all-inclusive.

WESTERN DEVELOPMENT DIVISION		
Gen. Bernard A. Schriever	July 1, 1953	May 31, 1957

AIR FORCE BALLISTIC MISSILE DIVISION		
Gen. Bernard A. Schriever	June 1, 1957	April 24, 1959
Maj. Gen. Osmond J. Ritland	April 25, 1959	March 31, 1961

SPACE AND MISSILE SYSTEMS ORGANIZATION		
Lt. Gen. John W. O'Neill	July 1, 1967	Aug. 31, 1969
Lt. Gen. Samuel C. Phillips	Sept. 1, 1969	Aug. 24, 1972
Lt. Gen. Kenneth W. Schultz	Aug. 25, 1972	Aug. 28, 1975
Lt. Gen. Thomas W. Morgan	Aug. 29, 1975	April 28, 1978
Lt. Gen. Richard C. Henry	April 29, 1978	Sept. 30, 1979

SPACE DIVISION		
Lt. Gen. Richard C. Henry	Oct. 1, 1979	May 1, 1983
Lt. Gen. Forrest S. McCartney	May 1, 1983	Sept. 30, 1986
Lt. Gen. Aloysius G. Casey	Oct. 9, 1986	June 23, 1988
Lt. Gen. Donald L. Cromer	June 24, 1988	March 14, 1989

BALLISTIC MISSILE OFFICE		
Maj. Gen. John W. Hepfer	Oct. 1, 1979	Oct. 31, 1980
Maj. Gen. Forrest S. McCartney	Oct. 31, 1980	May 19, 1982
Maj. Gen. Aloysius G. Casey	May 19, 1982	Sept. 30, 1986
Maj. Gen. Edward P. Berry Jr.	Sept. 30, 1986	March 14, 1989

SPACE SYSTEMS DIVISION (SSD) AND BALLISTIC SYSTEM DIVISION (BSD)		
Lt. Gen. Donald L. Cromer (SSD)	March 15, 1989	May 31, 1991
Lt. Gen. Edward P. Barry Jr. (SSD)	July 8, 1991	June 30, 1992
Lt. Gen. Edward P. Barry Jr. (BSD)	March 15, 1989	May 30, 1989
Brig. Gen. Ralph G. Tourino (BSD)	May 30, 1989	May 4, 1990

SPACE AND MISSILE SYSTEMS CENTER		
Lt. Gen. Edward P. Barry Jr.	July 1, 1992	Nov. 16, 1994
Lt. Gen. Lester L. Lyles	Nov. 16, 1994	Aug. 18, 1996

SPACE SYSTEMS DIVISION (SSD) AND BALLISTIC SYSTEMS DIVISION (BSD)		
Maj. Gen. Osmond J. Ritland (SSD)	April 1, 1961	May 13, 1962
Lt. Gen. Howell M. Estes Jr. (SSD)	May 14, 1962	Oct. 2, 1962
Maj. Gen. Ben I. Funk (SSD)	Oct. 3, 1962	Aug. 31, 1966
Maj. Gen. Paul T. Cooper (SSD)	Sept. 1, 1966	June 30, 1967
Maj. Gen. Thomas P. Gerrity (BSD)	April 1, 1961	June 30, 1962
Lt. Gen. W. Austin Davis (BSD)	July 1, 1962	July 18, 1964
Maj. Gen. Harry Sands Jr. (BSD)	July 20, 1966	June 30, 1967
Maj. Gen. John L. McCoy (BSD)	July 20, 1966	June 30, 1969

SPACE AND MISSILE SYSTEMS CENTER		
Lt. Gen. Roger G. DeKok	Aug. 18, 1996	Aug. 12, 1998
Lt. Gen. Eugene L. Tattini	Aug. 13, 1998	May 25, 2001
Lt. Gen. Brian A. Arnold	May 25, 2001	May 20, 2005
Lt. Gen. Michael A. Hamel	May 20, 2005	May 16, 2008
Lt. Gen. John T. Sheridan	May 16, 2008	June 3, 2011
Lt. Gen. Ellen M. Pawlikowski	June 3, 2011	June 19, 2014
Lt. Gen. Samuel A. Greaves	Jun 19, 2014	March 22, 2017
Lt. Gen. John F. Thompson	March 22, 2017	Aug. 1, 2021



Gen. Bernard A. Schriever was the chief architect of the U.S. Air Force's early ballistic missile and space programs.

AIR FORCE SPACE COMMAND		
Gen. James V. Hartinger	Sept. 1, 1982	July 30, 1984
Gen. Robert T. Herres	July 30, 1984	Oct. 1, 1986
Maj. Gen. Maurice C. Padden	Oct. 1, 1986	Oct. 29, 1987
Lt. Gen. Donald J. Kutyna	Oct. 29, 1987	March 29, 1990
Lt. Gen. Thomas S. Moorman Jr.	March 29, 1990	March 23, 1992
Gen. Donald J. Kutyna	March 23, 1992	June 30, 1992
Gen. Charles A. Horner	June 30, 1992	Sept. 13, 1994
Gen. Joseph W. Ashy	Sept. 13, 1994	Aug. 26, 1996
Gen. Howell M. Estes III	Aug. 26, 1996	Aug. 14, 1998
Gen. Richard B. Myers	Aug. 14, 1998	Feb. 22, 2000
Gen. Ralph E. Eberhart	Feb. 22, 2000	April 19, 2002
Gen. Lance W. Lord	April 19, 2002	April 1, 2006
Lt. Gen. Frank G. Klotz (acting)	April 1, 2006	June 26, 2006
Gen. Kevin P. Chilton	June 26, 2006	Oct. 3, 2007
Lt. Gen. Michael A. Hamel (acting)	Oct. 3, 2007	Oct. 12, 2007
Gen. C. Robert Kehler	Oct. 12, 2007	Jan. 5, 2011
Gen. William L. Shelton	Jan. 5, 2011	Aug. 15, 2014
Gen. John E. Hyten	Aug. 15, 2014	Oct. 25, 2016
Gen. John W. Raymond	Oct. 25, 2016	Jan. 14, 2020

U.S. SPACE FORCE		
Gen. John W. Raymond	Jan. 14, 2020	Nov. 2, 2022
Gen. B. Chance Saltzman	Nov. 22, 2022	

SPACE OPERATIONS COMMAND (SpOC)		
Lt. Gen. Stephen N. Whiting	Oct. 2020	

SPACE SYSTEMS COMMAND (SSC)		
Lt. Gen. Michael A. Guetlein	Aug. 13, 2021	

SPACE TRAINING AND READINESS COMMAND (STARCOM)		
Maj. Gen. Shawn N. Bratton	Aug. 23, 2021	

