

# Major Commands and Reserve Components

## ■ 2012 USAF Almanac

A major command is a subdivision of the Air Force assigned a major part of the Air Force mission and directly subordinate to Hq. USAF. (Note: All data as of Sept. 30, 2011)

# ACC

## Air Combat Command

**Headquarters** JB Langley-Eustis, Va.

**Established** June 1, 1992

**Commander** Gen. G. Michael Hostage III



### PRIMARY MISSION

Primary force provider of combat airpower—fighter, conventional bomber, reconnaissance, battle management, and electronic combat aircraft—to combatant commands; provide C3I systems and conduct global information operations.

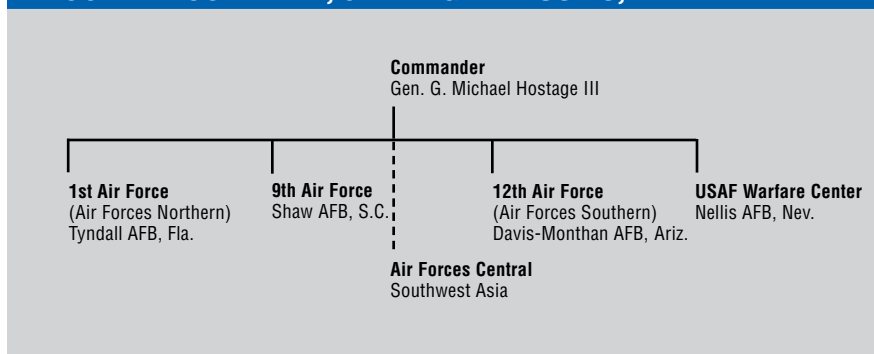
### PERSONNEL

Active duty	68,179
Civilian	10,295
<b>Total</b>	<b>78,474</b>

### EQUIPMENT (Total active inventory)

Bomber	64
Fighter/Attack	646
ISR/BM/C3	313
Tanker	16
Helicopter	37
Trainer	50

### AIR COMBAT COMMAND, JB LANGLEY-EUSTIS, VA.



### MAJOR WINGS/CENTERS

### LOCATION

### AIRCRAFT/MISSION/WEAPON

1st Fighter Wing	JB Langley-Eustis, Va.	F-22
4th FW	Seymour Johnson AFB, N.C.	F-15E
7th Bomb Wing	Dyess AFB, Tex.	B-1B
9th Reconnaissance Wing	Beale AFB, Calif.	MC-12W, RQ-4, T-38A, U-2
20th FW	Shaw AFB, S.C.	F-16CJ
23rd Wing	Moody AFB, Ga.	A-10C, HC-130, HH-60G
28th BW	Ellsworth AFB, S.D.	B-1B
49th Wing	Holloman AFB, N.M.	F-22, MQ-1, MQ-9, T-38C
53rd Wing	Eglin AFB, Fla.	A-10C, B-1B, B-2, B-52H, F-15, F-16, F-22, HC-130J, HH-60G, MQ-1, MQ-9, RQ-4
55th Wing	Offutt AFB, Neb.	E-4B, OC-135B, RC-135S, RC-135U, RC-135V/W, WC-135
57th Wing	Nellis AFB, Nev.	A-10C, F-15, F-15E, F-16, F-22, HH-60G (23rd Wing), MQ-1, MQ-9
93rd Air Ground Operations Wing	Moody AFB, Ga.	Battlefield airmen operations and support
99th Air Base Wing	Nellis AFB, Nev.	Base support
355th FW	Davis-Monthan AFB, Ariz.	A-10C, EC-130H (55th Wing), HC-130 & HH-60G (23rd Wing)
366th FW	Mountain Home AFB, Idaho	F-15E
388th FW	Hill AFB, Utah	F-16
432nd Wing	Creech AFB, Nev.	MQ-1, MQ-9
461st Air Control Wing	Robins AFB, Ga.	E-8C (Active Associate)
505th Command & Control Wing	Hurlburt Field, Fla.	C2 operational-level tactics, testing, training
552nd ACW	Tinker AFB, Okla.	E-3B/C/G
633rd ABW	JB Langley-Eustis, Va.	Joint base facilities support
Air Force Rescue & Coordination Center	Tyndall AFB, Fla.	National search/rescue coordination

# AETC

## Air Education and Training Command

**Headquarters** JBSA-Randolph, Tex.

**Established** July 1, 1993

**Commander** Gen. Edward A. Rice Jr.



### PRIMARY MISSION

Recruit, train, and educate airmen through basic military training, initial and advanced technical training, and professional military education.

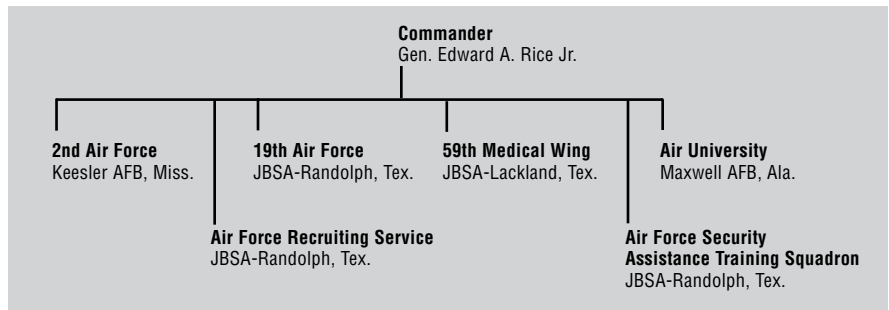
### PERSONNEL

Active duty 56,896  
Civilian 16,585  
**Total 73,481**

### EQUIPMENT (TAI)

Fighter/Attack 150  
Special operations forces 14  
Tanker 29  
Transport 25  
Helicopter 41  
Trainer 1,116

### AIR EDUCATION AND TRAINING COMMAND, JBSA-RANDOLPH, TEX.



**Abbreviations:** CSO: combat systems officer; JBSA: Joint Base San Antonio; NAS: Naval Air Station; ROTC: Reserve Officer Training Corps.

### MAJOR WINGS/CENTERS

12th Flying Training Wing  
14th FTW  
17th Training Wing (TRW)  
33rd Fighter Wing  
37th TRW  
42nd Air Base Wing  
47th FTW  
56th FW  
58th Special Operations Wing

59th Medical Wing  
71st FTW  
80th FTW  
81st TRW  
82nd TRW  
97th Air Mobility Wing  
314th Airlift Wing  
325th FW  
502nd ABW  
Air Force Institute of Technology  
Air Force Research Institute  
Carl A. Spaatz Center for Officer Education  
Curtis E. LeMay Center for Doctrine Dev. & Education  
Ira C. Eaker Center for Professional Dev.  
Jeanne M. Holm Officer Accession & Citizen Dev. Center  
Muir S. Fairchild Research Information Center  
Thomas N. Barnes Center for Enlisted Education

### LOCATION

JBSA-Randolph, Tex.  
Columbus AFB, Miss.  
Goodfellow AFB, Tex.  
Eglin AFB, Fla.  
JBSA-Lackland, Tex.  
Maxwell AFB, Ala.  
Laughlin AFB, Tex.  
Luke AFB, Tex.  
Kirtland AFB, N.M.  
  
Lackland AFB, Tex.  
Vance AFB, Okla.  
Sheppard AFB, Tex.  
Keesler AFB, Miss.  
Sheppard AFB, Tex.  
Altus AFB, Okla.  
Little Rock AFB, Ark.  
Tyndall AFB, Fla.  
Fort Sam Houston, Tex.  
Wright-Patterson AFB, Ohio  
Maxwell AFB, Ala.  
Maxwell AFB, Ala.  
Maxwell AFB, Ala.  
Maxwell AFB, Ala.  
Maxwell AFB, Ala.  
Maxwell AFB, Ala.

### AIRCRAFT/MISSION/WEAPON

T-1A, T-6A, T-38C (CSO at NAS Pensacola, Fla.)  
T-1A, T-6A, T-38C  
Technical training  
F-35  
Basic military and technical training  
Base support  
T-1A, T-6A, T-38C  
F-16  
CV-22, HC-130, HH-60, MC-130H, MC-130J, MC-130P  
Wilford Hall Ambulatory Surgical Center  
T-1A, T-6A, T-38C  
T-6A, T-38C  
Technical training  
Technical training  
C-17, KC-135R  
C-130H/J  
F-22  
JBSA facilities support  
Postgraduate education  
Historical research  
Officer professional military education (PME)  
Air Force doctrine development  
Professional and technical continuing education  
Officer training, ROTC oversight  
Information resources  
Enlisted PME

*Maj. Frank Baumann, a pilot with the 459th Flying Training Squadron, works a simulator at an AETC symposium.*



USAF photo by SSgt. Erik Cardenas

# AFGSC

## Air Force Global Strike Command

**Headquarters** Barksdale AFB, La.

**Established** Aug. 7, 2009

**Commander** Lt. Gen. James M. Kowalski



### PRIMARY MISSION

Organize, train, equip, maintain, and provide ICBM forces and nuclear-capable bomber forces to combatant commanders.

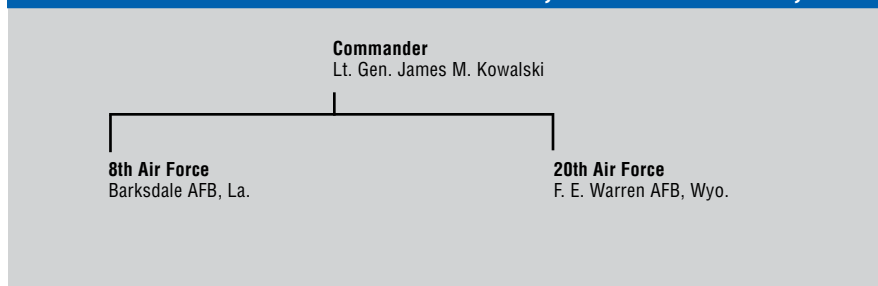
### PERSONNEL

Active duty	19,273
Civilian	2,734
<b>Total</b>	<b>22,007</b>

### EQUIPMENT (TAI)

Bomber	76
Helicopter	25
ICBM	450

### AIR FORCE GLOBAL STRIKE COMMAND, BARKSDALE AFB, LA.



**Note:** USAF redesignated Strategic Air Command, established Dec. 13, 1944, as Air Force Global Strike Command and activated AFGSC on Aug. 7, 2009.

MAJOR UNITS	LOCATION	AIRCRAFT/MISSION/WEAPON
2nd Bomb Wing	Barksdale AFB, La.	B-52H
5th BW	Minot AFB, N.D.	B-52H
90th Missile Wing	F. E. Warren AFB, Wyo.	Minuteman III, UH-1N
91st MW	Minot AFB, N.D.	Minuteman III, UH-1N
341st MW	Malmstrom AFB, Mont.	Minuteman III, UH-1N
509th BW	Whiteman AFB, Mo.	B-2
576th Flight Test Squadron	Vandenberg AFB, Calif.	ICBM testing
625th Strategic Operations Squadron	Offutt AFB, Neb.	ICBM-related analysis, targeting system operations, training

USAF photo by TSgt. Lee A. Osberry Jr.



*A B-52 speeds down the runway during a rapid launch exercise at Minot AFB, N.D.*

# AFMC Air Force Materiel Command

**Headquarters** Wright-Patterson AFB, Ohio

**Established** July 1, 1992

**Commander** Gen. Donald J. Hoffman



## PRIMARY MISSION

Research, develop, procure, test, and sustain USAF weapon systems.

## PERSONNEL

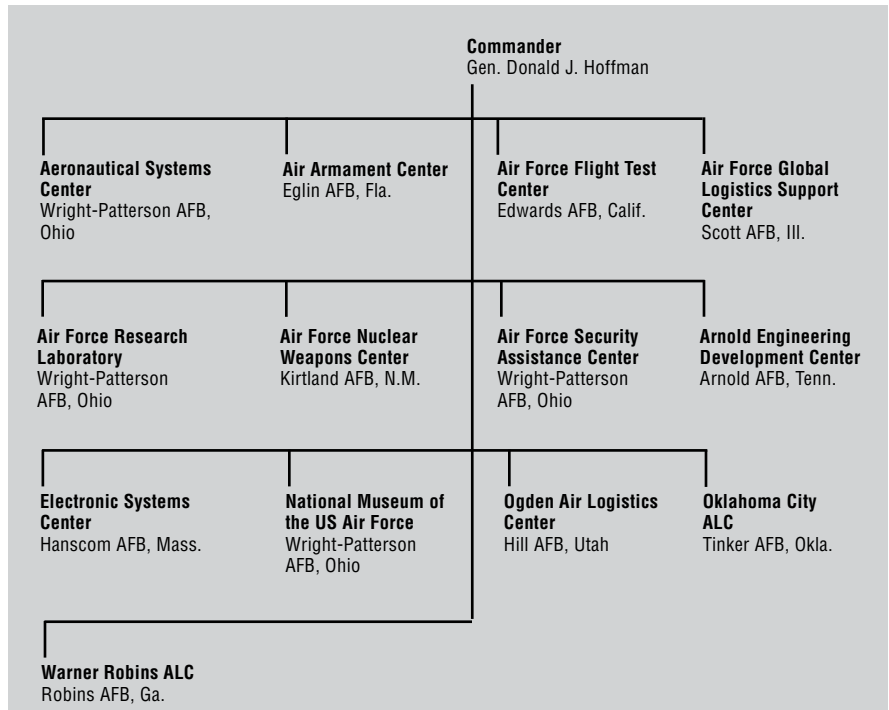
Active duty	19,500
Civilian	64,426
<b>Total</b>	<b>83,926</b>

## EQUIPMENT (TAI)

Bomber	4
Fighter/Attack	52
ISR/BM/C3	25
Tanker	2
Transport	25
Helicopter	7
Trainer	24

**Note:** The commandwide restructuring AFMC announced in fall 2011 is not planned to take effect until Oct. 1, 2012.

## AIR FORCE MATERIEL COMMAND, WRIGHT-PATTERSON AFB, OHIO



## MAJOR GROUPS/WINGS

46th Test Wing  
 66th Air Base Group  
 72nd Air Base Wing  
 75th ABW  
 76th Maintenance Wing  
 78th ABW  
 88th ABW  
 95th ABW  
 96th ABW  
 309th Aerospace Maintenance & Regeneration Group  
 309th MXW  
 377th ABW  
 402nd MXW  
 412th TW  
 448th Supply Chain Management Wing  
 498th Nuclear Systems Wing  
 711th Human Performance Wing

## LOCATION

Eglin AFB, Fla.  
 Hanscom AFB, Mass.  
 Tinker AFB, Okla.  
 Hill AFB, Utah  
 Tinker AFB, Okla.  
 Robins AFB, Ga.  
 Wright-Patterson AFB, Ohio  
 Edwards AFB, Calif.  
 Eglin AFB, Fla.  
 Davis-Monthan AFB, Ariz.  
 Hill AFB, Utah  
 Kirtland AFB, N.M.  
 Robins AFB, Ga.  
 Edwards AFB, Calif.  
 Tinker AFB, Okla.  
 Kirtland AFB, N.M.  
 Wright-Patterson AFB, Ohio

## AIRCRAFT/MISSION/WEAPON

A-10C, C-130, F-15, F-15E, F-16CG/CJ, UH-1N  
 Base support  
 Base support  
 Base support  
 Aircraft/weapon sustainment  
 Base support  
 Base support  
 Base support  
 Aircraft maintenance/regeneration  
 Aircraft/weapon sustainment  
 Base support  
 Aircraft/weapon sustainment  
 Various, including F-35A  
 Supply chain operations/oversight  
 Nuclear weapons sustainment  
 Human performance evaluation/research



**A team from Eglin Air Force Base's 46th Test Wing arrives at Duke Field, Fla.**

USAF photo by Samuel King Jr.

# AFRC

## Air Force Reserve Command

**Headquarters** Robins AFB, Ga.

**Established** Feb. 17, 1997

**Commander** Lt. Gen. Charles E. Stenner Jr.



### PRIMARY MISSION

Provide strike, air mobility, special operations forces, rescue, aeromedical evacuation, aerial firefighting and spraying, weather reconnaissance, space, flying training, and other capabilities to support the active duty force and assist with domestic and foreign disaster relief.

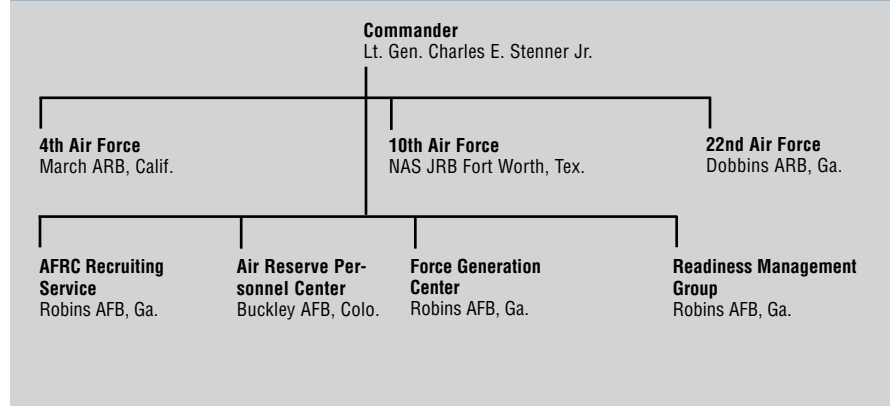
### PERSONNEL

Total (selected reserve)	71,321
Active duty	599
Civilian (includes technicians)	13,204
<b>Total</b>	<b>85,124</b>

### EQUIPMENT (TAI)

Bomber	18
Fighter/Attack	100
SOF	10
ISR/BM/C3	12
Tanker	72
Transport	152
Helicopter	15

### AIR FORCE RESERVE COMMAND, ROBINS AFB, GA.



**Abbreviations:** AOC: Air & Space Operations Center; DCGS: Distributed Common Ground Station.

### MAJOR GROUPS/WINGS

### LOCATION

### AIRCRAFT/MISSION/WEAPON

MAJOR GROUPS/WINGS	LOCATION	AIRCRAFT/MISSION/WEAPON
94th Airlift Wing	Dobbins ARB, Ga.	C-130
301st Fighter Wing	NAS JRB Fort Worth, Tex.	F-16
302nd AW	Peterson AFB, Colo.	C-130 (including Modular Airborne Firefighting System)
307th Bomb Wing	Barksdale AFB, La.	B-52
310th Space Wing	Schriever AFB, Colo.	Space control/operations/warning, information operations
315th AW	JB Charleston, S.C.	C-17
340th Flying Training Group	JBSA-Randolph, Tex.	T-1A, T-6A (both Associate)
349th Air Mobility Wing	Travis AFB, Calif.	C-5A, C-17, KC-10 (all Associate)
403rd Wing	Keesler AFB, Miss.	C-130J, WC-130J (Hurricane Hunters)
413th Flight Test Group	Robins AFB, Ga.	Depot flight test
419th FW	Hill AFB, Utah	F-16 (Associate)
433rd AW	JBSA-Lackland, Tex.	C-5A, Formal Training Unit
434th Air Refueling Wing	Grissom ARB, Ind.	KC-135R
439th AW	Westover ARB, Mass.	C-5B
440th AW	Pope Field, N.C.	C-130
442nd FW	Whiteman AFB, Mo.	A-10C (also at Barksdale AFB, La., Davis-Monthan AFB, Ariz.)
445th AW	Wright-Patterson AFB, Ohio	C-17
446th AW	JB Lewis-McChord, Wash.	C-17 (Associate)
452nd AMW	March ARB, Calif.	C-17, KC-135R
459th ARW	JB Andrews, Md.	KC-135R
477th Fighter Group	JB Elmendorf-Richardson, Alaska	F-22 (Associate)
482nd FW	Homestead ARB, Fla.	F-16
507th ARW	Tinker AFB, Okla.	KC-135R
512th AW	Dover AFB, Del.	C-5B/M, C-17 (both Associate)
513th Air Control Group	Tinker AFB, Okla.	E-3 (Associate)
514th AMW	JB McGuire-Dix-Lakehurst, N.J.	C-17, KC-10 (both Associate)
624th Regional Support Group	JB Pearl Harbor-Hickam, Hawaii	Contingency aerial port, civil engineer, medical combat support
908th AW	Maxwell AFB, Ala.	C-130
910th AW	Youngstown ARS, Ohio	C-130
911th AW	Pittsburgh Arpt., Pa.	C-130
914th AW	Niagara Falls Arpt., N.Y.	C-130
916th ARW	Seymour Johnson AFB, N.C.	KC-135R
919th Special Operations Wing	Duke Field, Fla.	MC-130E
920th Rescue Wing	Patrick AFB, Fla.	HC-130P/N, HH-60G, WC-130
926th Group	Nellis AFB, Nev.	Various (Nellis), MQ-1 and MQ-9 (Creech AFB, Nev.) (all Associate)
927th ARW	MacDill AFB, Fla.	KC-135R (Associate)
931st Air Refueling Group	McConnell AFB, Kan.	KC-135R (Associate)
932nd AW	Scott AFB, Ill.	C-40
934th AW	Minneapolis-St. Paul Arpt., Minn.	C-130
940th Wing	Beale AFB, Calif.	AOC, DCGS, RQ-4
944th FW	Luke AFB, Ariz.	F-16 (Associate)

# AFSPC

## Air Force Space Command

**Headquarters** Peterson AFB, Colo.

**Established** Sept. 1, 1982

**Commander** Gen. William L. Shelton



### PRIMARY MISSION

Organize, train, equip, maintain, and provide space and cyberspace operations forces; develop, procure, and test space systems; sustain national space launch facilities.

### PERSONNEL

Active duty	14,027
Civilian	8,303
<b>Total</b>	<b>22,330</b>

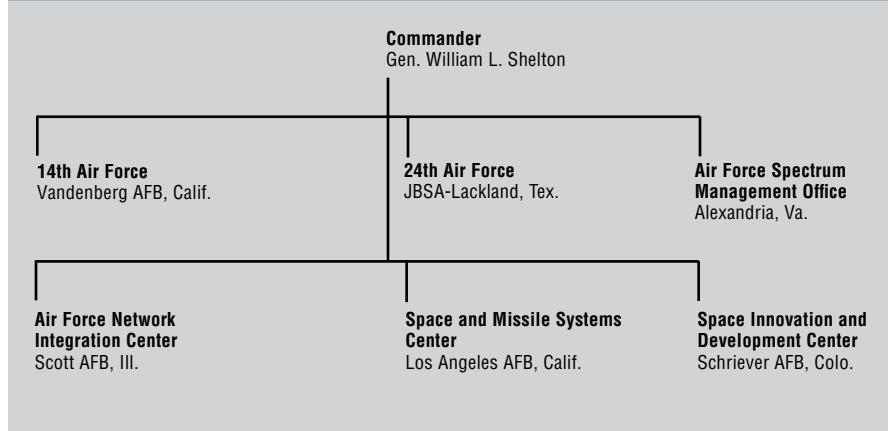
### EQUIPMENT

Air Force Satellite Control Network  
BMEWS  
GEODSS  
Launch/test ranges  
Pave PAWS  
PARCS  
Space surveillance radars

### Satellite systems (on orbit):

AEHF	1
DSP	classified
GPS	34
DMSP	6
DSCS III	8

### AIR FORCE SPACE COMMAND, PETERSON AFB, COLO.



Milstar	5
SBIRS	4
SBSS	1
WGS	3

**Abbreviations:** **BMEWS:** Ballistic Missile Early Warning System; **GEODSS:** Ground-based Electro-Optical Deep Space Surveillance System; **PAWS:** Phased Array Warning System; **PARCS:** Perimeter Acquisition Radar Attack Characterization System; for satellites, see Gallery of Weapons.

### MAJOR GROUPS/WINGS

### LOCATION

### AIRCRAFT/MISSION/WEAPON

21st Space Wing	Peterson AFB, Colo.	Space control/warning
30th SW	Vandenberg AFB, Calif.	Space launch, ICBM test, launch range operations
45th SW	Patrick AFB, Fla.	Space launch, launch range operations
50th SW	Schriever AFB, Colo.	C2 space operations
61st Air Base Group	Los Angeles AFB, Calif.	Base support
67th Network Warfare Wing	JBSA-Lackland, Tex.	Cyberspace operations
460th SW	Buckley AFB, Colo.	Space surveillance/warning
688th Information Operations Wing	JBSA-Lackland, Tex.	Command and control warfare operations
689th Combat Communications Wing	JBSA-Lackland, Tex.	Expeditionary, specialized communications/air traffic control
821st Air Base Group	Thule AB, Greenland	Base support



*An Atlas V rocket carrying USAF's Space Based Infrared System GEO-1 satellite rolls out to its launch pad.*

United Launch Alliance photo by Pat Corkery

# AFSOC

## Air Force Special Operations Command

**Headquarters** Hurlburt Field, Fla.

**Established** May 22, 1990

**Commander** Lt. Gen. Eric E. Fiel



### PRIMARY MISSION

Organize, train, equip, maintain, and provide special operations airpower forces to combatant commanders.

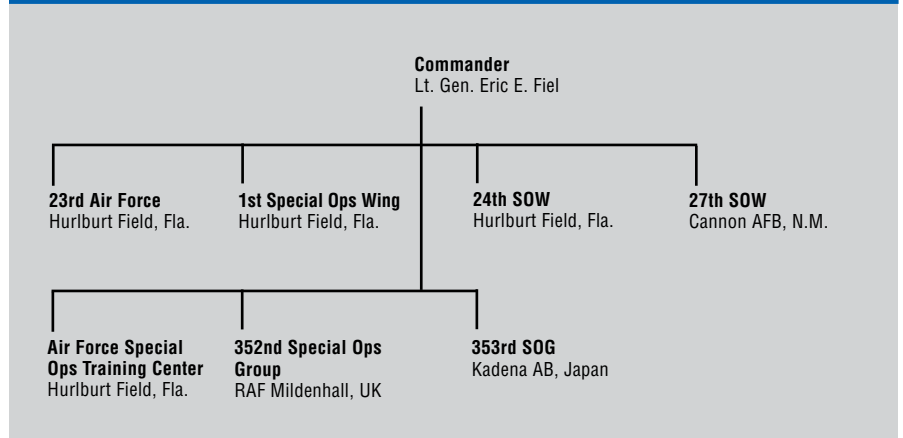
### PERSONNEL

Active duty	13,194
Civilian	1,762
<b>Total</b>	<b>14,956</b>

### EQUIPMENT (TAI)

SOF	93
ISR/BM/C3	39
Helicopter	4

### AIR FORCE SPECIAL OPERATIONS COMMAND, HURLBURT FIELD, FLA.



### MAJOR UNITS

1st Special Operations Wing  
11th Intelligence Squadron  
18th Flight Test Squadron  
23rd Weather Squadron  
24th SOW  
27th SOW  
352nd Special Operations Group  
353rd SOG  
623rd Air & Space Operations Center

### LOCATION

Hurlburt Field, Fla.  
Hurlburt Field, Fla.  
Hurlburt Field, Fla.  
Hurlburt Field, Fla.  
Hurlburt Field, Fla.  
Cannon AFB, N.M.  
RAF Mildenhall, UK  
Kadena AB, Japan  
Hurlburt Field, Fla.

### AIRCRAFT/MISSION/WEAPON

AC-130U, CV-22, MC-130H, MC-130J, MC-130P  
Analysis for special operations targets  
Test and evaluation for aircraft, equipment, tactics  
Reachback weather operations  
Battlefield airmen operations  
AC-130H, MC-130W, MQ-1, MQ-9  
MC-130H, MC-130P  
MC-130H, MC-130P  
Plan/direct airpower special operations

USAF photo by TSgt. Angelique Billog



*An MC-130P Combat Shadow refuels an HH-60G Pave Hawk.*

# AMC

## Air Mobility Command

**Headquarters** Scott AFB, Ill.

**Established** June 1, 1992

**Commander** Gen. Raymond E. Johns Jr.



### PRIMARY MISSION

Organize, train, equip, maintain, and provide air mobility forces to sustain worldwide airpower operations.

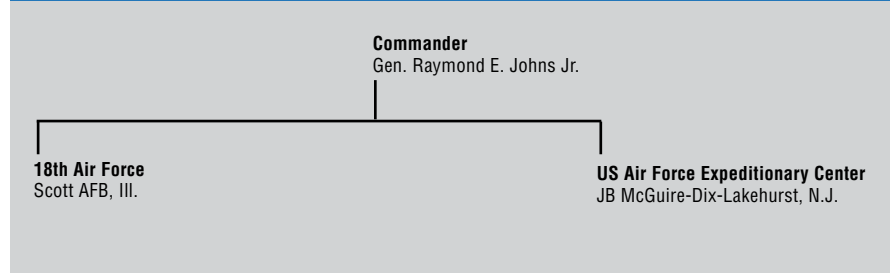
### PERSONNEL

Active duty 45,306  
 Civilian 9,839  
**Total 55,145**

### EQUIPMENT (TAI)

Tanker 170  
 Transport 312

### AIR MOBILITY COMMAND, SCOTT AFB, ILL.



Abbreviation: AOC: Air & Space Operations Center.

MAJOR UNITS	LOCATION	AIRCRAFT/MISSION/WEAPON
6th Air Mobility Wing	MacDill AFB, Fla.	C-37, KC-135R
19th Airlift Wing	Little Rock AFB, Ark.	C-130
22nd Air Refueling Wing	McConnell AFB, Kan.	KC-135R
43rd Airlift Group	Pope Field, N.C.	C-130 (Active Associate)
60th AMW	Travis AFB, Calif.	C-5, C-17, KC-10
62nd AW	JB Lewis-McChord, Wash.	C-17
87th Air Base Wing	JB McGuire-Dix-Lakehurst, N.J.	Joint base facilities support
89th AW	JB Andrews, Md.	C-20, C-32, C-37, C-40, VC-25
92nd ARW	Fairchild AFB, Wash.	KC-135
305th AMW	JB McGuire-Dix-Lakehurst, N.J.	C-17, KC-10
317th AG	Dyess AFB, Tex.	C-130
319th ABW	Grand Forks AFB, N.D.	Base support
375th AMW	Scott AFB, Ill.	C-21, C-40 (AA), KC-135R (AA)
436th AW	Dover AFB, Del.	C-5
437th AW	JB Charleston, S.C.	C-17
515th Air Mobility Operations Wing	JB Pearl Harbor-Hickam, Hawaii	Contingency airfield operations
521st AMOW	Ramstein AB, Germany	Contingency airfield operations
618th AOC (Tanker Airlift Control Center)	Scott AFB, Ill.	Tanker Airlift Control Center operations
621st Contingency Response Wing	JB McGuire-Dix-Lakehurst, N.J.	Rapidly deployable bare base operations
627th Air Base Group	JB Lewis-McChord, Wash.	Base support
628th ABW	JB Charleston, S.C.	Joint base facilities support



*Soldiers prepare to board C-17 Globemaster IIIs during a joint exercise at Pope Field, N.C.*

USAF photo by TSgt. Sean M. Worrell



# PACAF

## Pacific Air Forces

**Headquarters** JB Pearl Harbor-Hickam, Hawaii

**Established** July 1, 1957

**Commander** Gen. Gary L. North



### PRIMARY MISSION

Provide US Pacific Command integrated expeditionary Air Force capabilities, including strike, air mobility, and rescue forces.

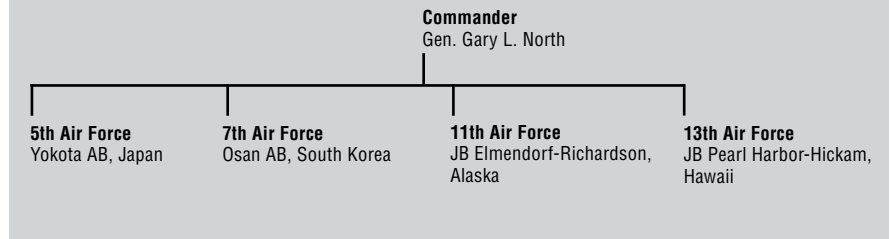
### PERSONNEL

Active duty	29,314
Civilian	8,155
<b>Total</b>	<b>37,469</b>

### EQUIPMENT (TAI)

Fighter/Attack	263
ISR/BM/C3	4
Tanker	15
Transport	38
Helicopter	14

### PACIFIC AIR FORCES, JB PEARL HARBOR-HICKAM, HAWAII



### MAJOR UNITS

### LOCATION

### AIRCRAFT/MISSION/WEAPON

MAJOR UNITS	LOCATION	AIRCRAFT/MISSION/WEAPON
1st Air Support Operations Group	JB Lewis-McChord, Wash.	Battlefield airmen operations/support
3rd Wing	JB Elmendorf-Richardson, Alaska	C-12, C-17, E-3, F-15, F-22
8th Fighter Wing	Kunsan AB, South Korea	F-16
15th Wing	JB Pearl Harbor-Hickam, Hawaii	C-17, C-37, C-40, F-22 (Active Associate), KC-135 (AA)
18th Wing	Kadena AB, Japan	E-3, F-15, HH-60G, KC-135R
35th FW	Misawa AB, Japan	F-16CJ
36th Wing	Andersen AFB, Guam	Operational platform for rotating combat forces
36th Contingency Response Group	Andersen AFB, Guam	Rapidly deployable bare base operations
51st FW	Osan AB, South Korea	A-10C, C-12, F-16
354th FW	Eielson AFB, Alaska	F-16
374th Airlift Wing	Yokota AB, Japan	C-12, C-130
607th Air & Space Operations Center	Osan AB, South Korea	Plan/direct air operations
607th Air Intelligence Group	Osan AB, South Korea	Intelligence analysis
607th ASOG	Osan AB, South Korea	Battlefield airmen operations and support
611th AOC	JB Elmendorf-Richardson, Alaska	Plan/direct air operations
611th Air Support Group	JB Elmendorf-Richardson, Alaska	Remote facility operations, communications, engineering
613th AOC	JB Pearl Harbor-Hickam, Hawaii	Plan/direct air operations
673rd Air Base Wing	JB Elmendorf-Richardson, Alaska	Joint base facilities support

USAF photo by SSgt. Shelia deVera



*An F-22 Raptor comes in for a landing at JB Elmendorf-Richardson, Alaska.*

# USAFE

## US Air Forces in Europe

**Headquarters** Ramstein AB, Germany

**Established** Aug. 7, 1945

**Commander** Gen. Mark A. Welsh III



### PRIMARY MISSION

Serves as the air component for US European Command, directing air operations, including warfighting and humanitarian/peacekeeping actions, and maintains combat-ready forces for NATO responsibilities.

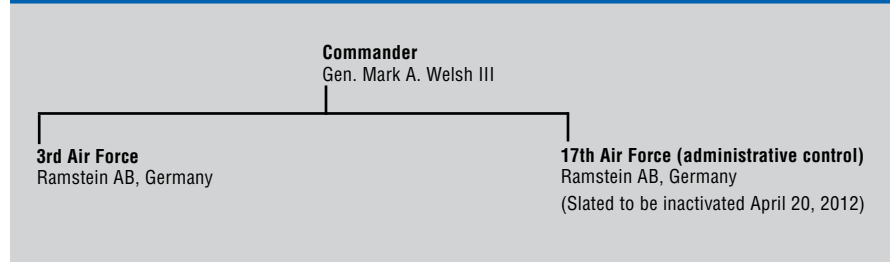
### PERSONNEL

Active duty	25,364
Civilian	6,351
<b>Total</b>	<b>31,715</b>

### EQUIPMENT (TAI)

Fighter/Attack	176
Tanker	15
Transport	27
Helicopter	5

### US AIR FORCES IN EUROPE, RAMSTEIN AB, GERMANY



### MAJOR UNITS

31st Fighter Wing  
39th Air Base Wing  
48th FW  
52nd FW  
65th ABW  
86th Airlift Wing  
100th Air Refueling Wing  
435th Air Ground Operations Wing  
501st Combat Support Wing  
603rd Air & Space Operations Center

### LOCATION

Aviano AB, Italy  
Incirlik AB, Turkey  
RAF Lakenheath, UK  
Spangdahlem AB, Germany  
Lajes Field, the Azores  
Ramstein AB, Germany  
RAF Mildenhall, UK  
Ramstein AB, Germany  
RAF Alconbury, UK  
Ramstein AB, Germany

### AIRCRAFT/MISSION/WEAPON

F-16  
Operational location for deployed US and NATO forces  
F-15, F-15E, HH-60G  
A-10C, F-16CJ  
Operational location for en route forces  
C-20, C-21, C-37, C-40, C-130J  
KC-135R  
Battlefield airmen support/operations  
Facilities support for seven geographically separated units  
Plan/direct air operations

*F-16s from Spangdahlem AB, Germany, line the ramp at Konya AB, Turkey, during a bilateral training exercise.*



USAF photo by SSgt. Benjamin Wilson

# ANG

## Air National Guard

**Headquarters** Washington, D.C.

**Established** Sept. 18, 1947

**Director** Lt. Gen. Harry M. Wyatt III



### PRIMARY MISSION

Provide combat capability to the active duty force and security for the homeland; support US domestic and foreign humanitarian and disaster relief.

### PERSONNEL

Total (selected reserve)	105,685
Active duty	208
Civilian (includes technicians)	23,403
<b>Total</b>	<b>129,296</b>

### EQUIPMENT (TAI)

Fighter/Attack	639
SOF	4
ISR/BM/C3	80
Tanker	189
Transport	242
Helicopter	17

**Note:** The Air National Guard also provides numerous other mission capabilities, including aeromedical evacuation, aircraft maintenance, command and control operations, and security forces.

Wing/State	System/Mission	Wing/State	System/Mission
101st Air Refueling Wing (ME)	KC-135R	151st ARW (UT)	KC-135R
102nd Intelligence Wing (MA)	DCGS	152nd AW (NV)	C-130, DCGS
103rd Airlift Wing (CT)	C-21, C-27J, AOC, CIRF	153rd AW (WY)	C-130, CACS
104th Fighter Wing (MA)	F-15	154th Wing (HI)	C-17, F-22, KC-135R
105th AW (NY)	C-5A	155th ARW (NE)	KC-135R
106th Rescue Wing (NY)	HC-130, HH-60G	156th AW (PR)	C-130
107th AW (NY)	C-130 (Reserve Associate)	157th ARW (NH)	KC-135R
108th ARW (NJ)	KC-135R	158th FW (VT)	F-16, cyber operations
109th AW (NY)	LC-130	159th FW (LA)	F-15
110th AW (MI)	C-21, C-27J	161st ARW (AZ)	KC-135R
111th FW (PA)	AOG, CSDC	162nd FW (AZ)	F-16, MQ-1, RC-26
113th Wing (DC)	C-38, C-40, F-16	163rd RW (CA)	MQ-1
114th FW (SD)	F-16	164th AW (TN)	C-5A
115th FW (WI)	F-16, RC-26	165th AW (GA)	C-130, CRTC
116th Air Control Wing (GA)	E-8C	166th AW (DE)	C-130, cyber operations
117th ARW (AL)	KC-135R	167th AW (WV)	C-5A
118th AW (TN)	C-130	168th ARW (AK)	KC-135R, missile warning
119th Wing (ND)	C-21, C-27J, MQ-1	169th FW (SC)	F-16CJ, WC-130H
120th FW (MT)	C-27J, F-15	171st ARW (PA)	KC-135R
121st ARW (OH)	KC-135R	172nd AW (MS)	C-17
122nd FW (IN)	A-10	173rd FW (OR)	F-15
123rd AW (KY)	C-130, battlefield airmen, CRG	174th FW (NY)	MQ-9, RC-26, battlefield airmen, CACS
124th FW (ID)	A-10C, C-27J, battlefield airmen, CACS	175th Wing (MD)	A-10C, C-27J, cyber operations
125th FW (FL)	F-15, RC-26, space launch	176th Wing (AK)	C-17, C-130, HC-130, HH-60G, RAOO
126th ARW (IL)	KC-135R	177th FW (NJ)	F-16
127th Wing (MI)	A-10C, KC-135R, special ops weather	178th FW (OH)	MQ-1 ground station
128th ARW (WI)	KC-135R	179th AW (OH)	C-27J
129th RQW (CA)	MC-130P, HH-60G	180th FW (OH)	F-16
130th AW (WV)	C-130, RC-26	181st IW (IN)	DCGS
131st Bomb Wing (MO)	B-2 (Associate)	182nd AW (IL)	C-130
132nd FW (IA)	F-16	183rd FW (IL)	CIRF, CNAF
133rd AW (MN)	C-130	184th IW (KS)	Battlefield airmen, CACS, DCGS, NOSS
134th ARW (TN)	KC-135R, CACS	185th ARW (IA)	KC-135R
136th AW (TX)	C-130	186th ARW (MS)	C-27J, KC-135R, MC-12W, RC-26
137th ARW (OK)	KC-135R (Reserve Associate)	187th FW (AL)	F-16, RC-26
138th FW (OK)	F-16	188th FW (AR)	A-10C
139th AW (MO)	C-130	189th AW (AR)	C-130
140th Wing (CO)	C-21, F-16, MGS	190th ARW (KS)	KC-135R
141st ARW (WA)	KC-135R, RC-26, combat communications	192nd FW (VA)	F-22
142nd FW (OR)	F-15	193rd Special Ops Wing (PA)	EC-130J
143rd AW (RI)	C-130, cyber operations	194th Regional Support Wing (WA)	battlefield airmen, cyber operations
144th FW (CA)	F-16, RC-26		
145th AW (NC)	C-130		
146th AW (CA)	C-130		
147th Reconnaissance Wing (TX)	MQ-1, RC-26		
148th FW (MN)	F-16CJ		
149th FW (TX)	F-16, cyber operations		
150th FW (NM)	RC-26, pararescue and special ops training		

**Abbreviations:** **AOC:** Air & Space Operations Center; **AOG:** Air Operations Group; **CACS:** Command and Control Squadron; **CIRF:** Central Intermediate Repair Facility; **CNAF:** Component Numbered Air Force; **CRG:** Contingency Response Group; **CRTC:** Combat Readiness Training Center; **CSDC:** Consolidated Storage Distribution Center (medical); **DCGS:** Distributed Common Ground Station; **MGS:** Mobile Ground Station; **NOSS:** Network Operations Security Squadron; **RAOO:** Region Air Operations Center; **RQW:** Rescue Wing.